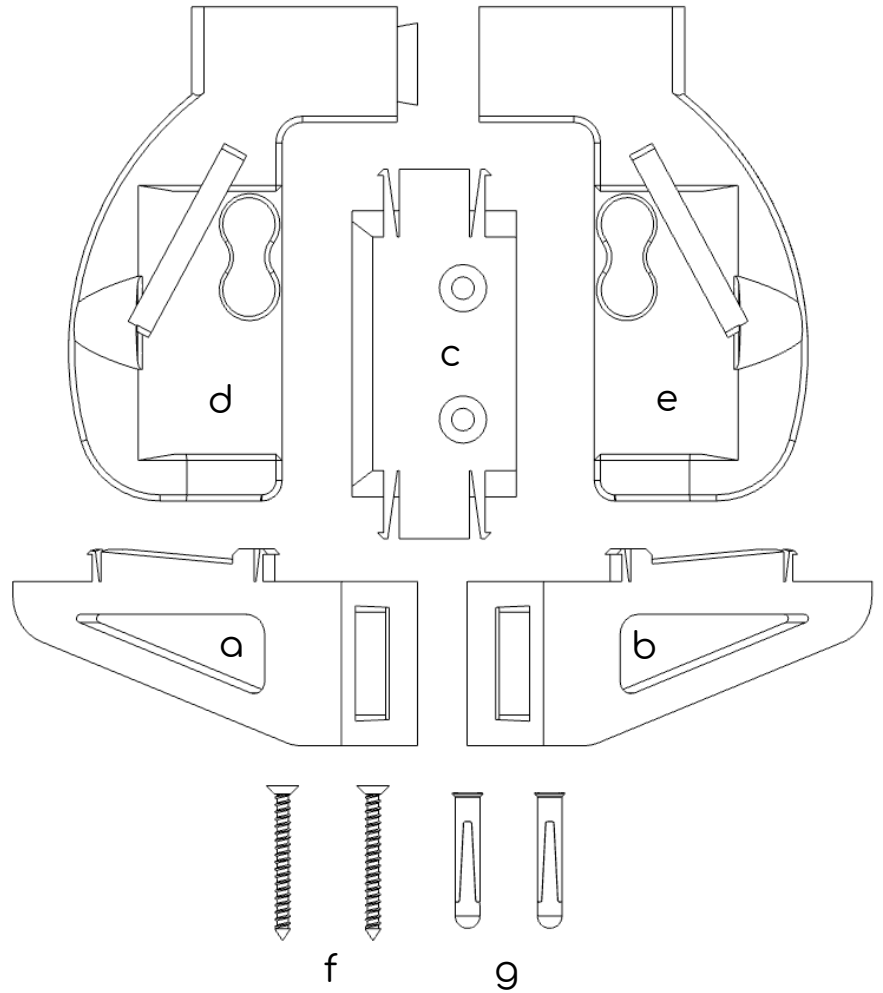


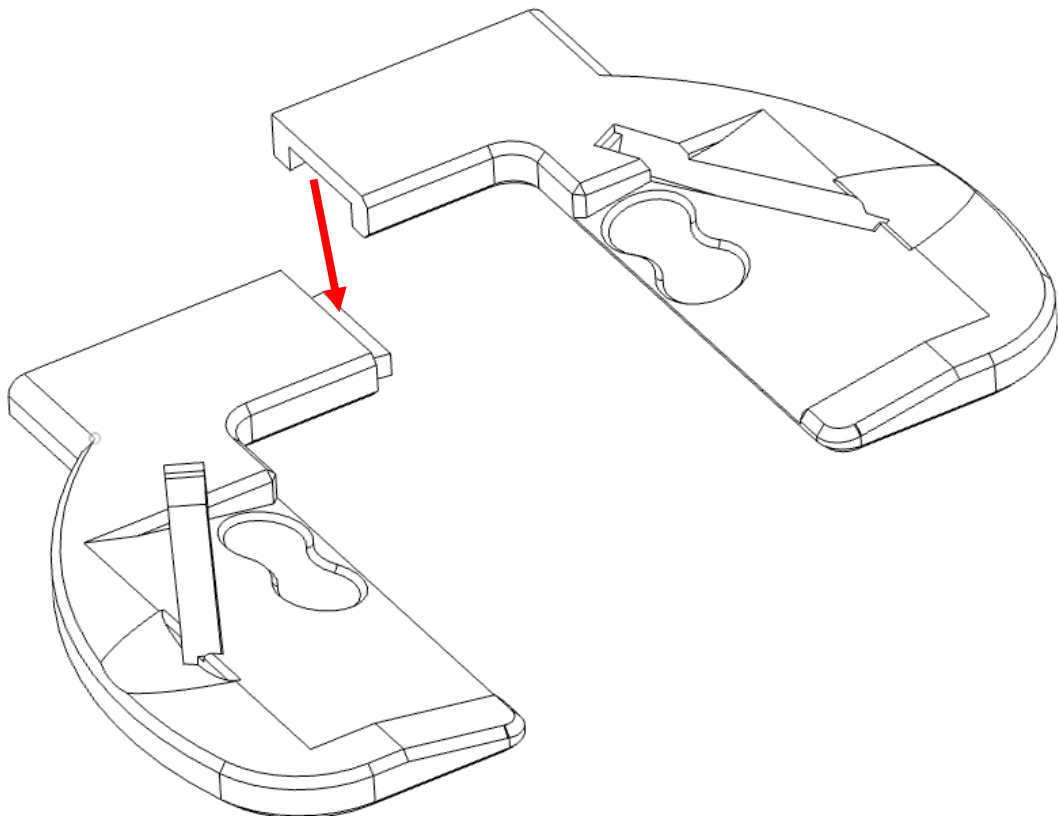
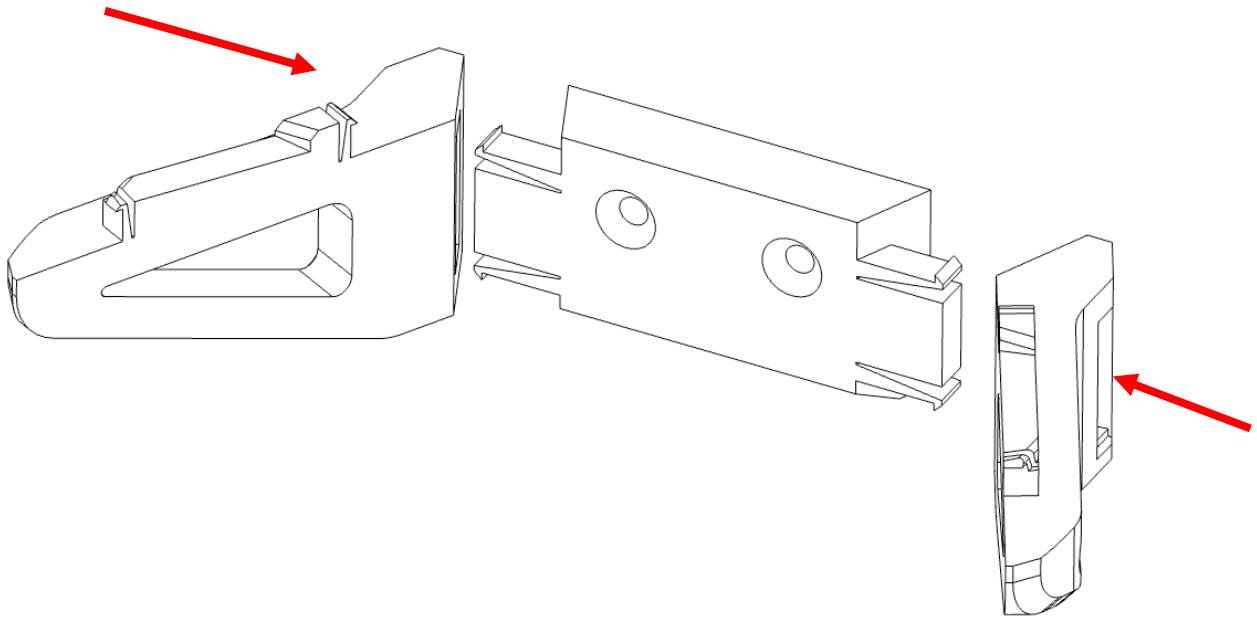
Wall Mount instructions For Bumblebee – (10338)

Kit Contents:

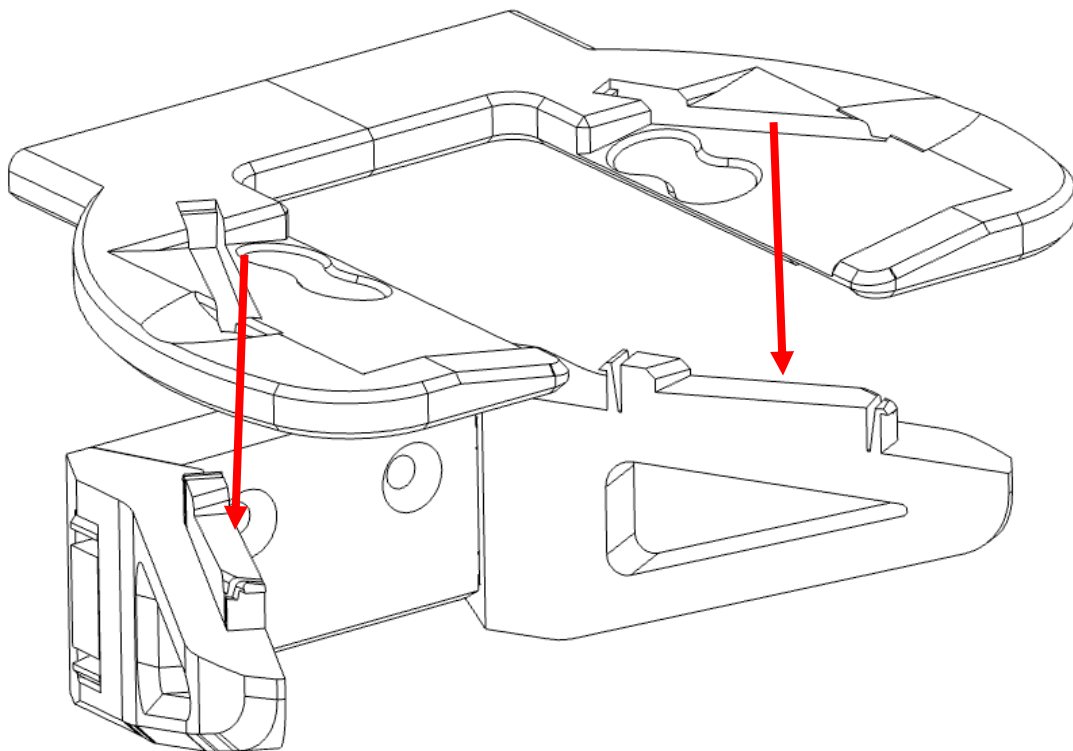
- A. 1x Left Arm
- B. 1x Right Arm
- C. 1x Wall Stretcher
- D. 1x Left upper
- E. 1x Right upper
- F. 2x Wall screws
- G. 2x Wal plugs



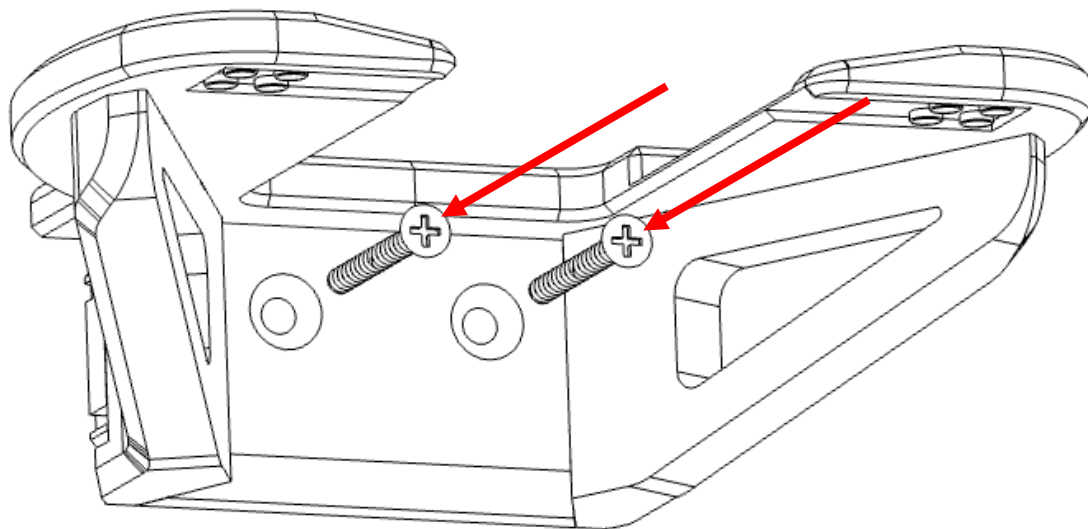
Wall Mount instructions For Bumblebee – (10338)



Wall Mount instructions For Bumblebee – (10338)

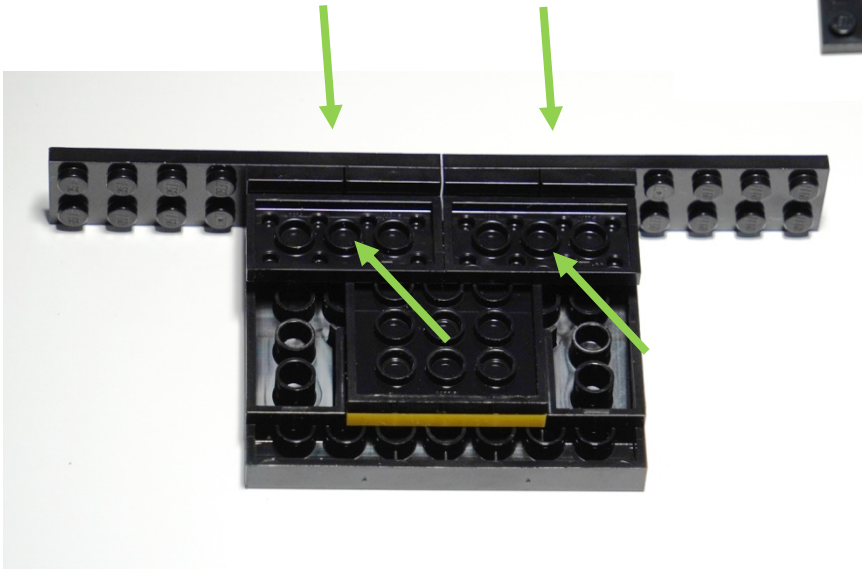
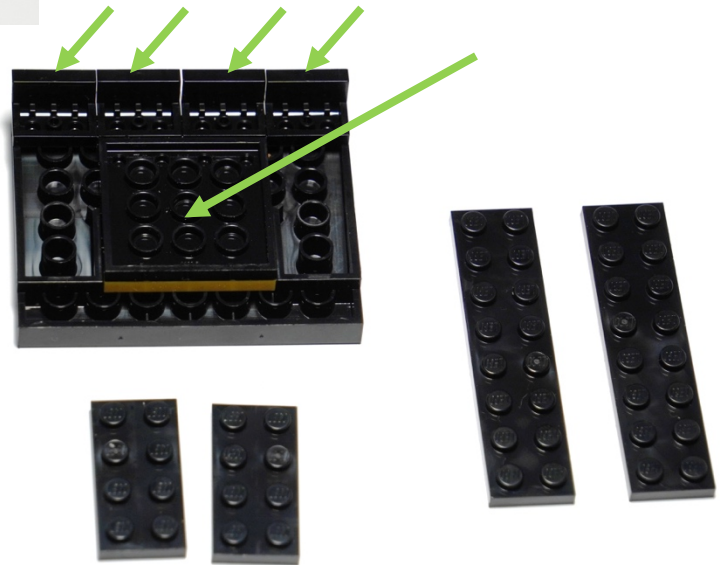


Use the provided wall fixings to secure to the wall. Do not over tighten the screws (use a screwdriver only).



Wall Mount instructions For Bumblebee – (10338)

Disassemble the info card stand



Wall Mount instructions For Bumblebee – (10338)

