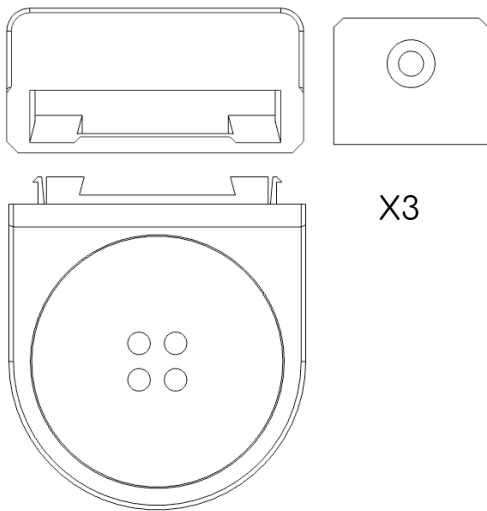


Kit contents

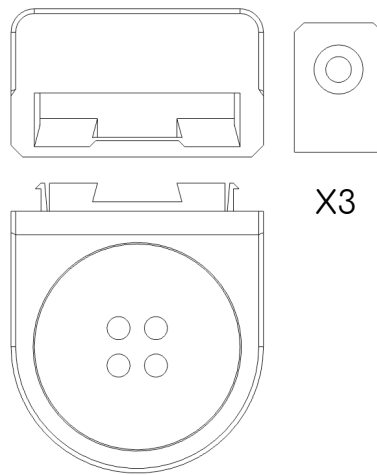
- A – 3x Small mount upper
- B – 3x Small mount lower
- C – 3x Medium mount upper
- D – 3x Medium mount lower
- E – 3x Large mount upper
- F – 3x Large mount lower
- G – 6x Small cleat
- H – 3x Large cleat
- I – 9x Wall screws (4-5mm x 50mm)
- J – 9x Wall plugs (6mmx30mm)



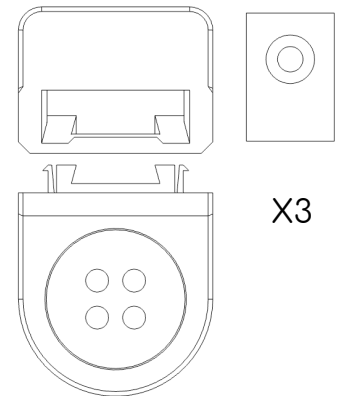
X9



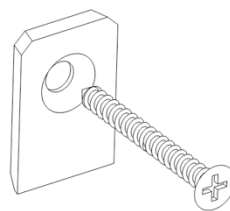
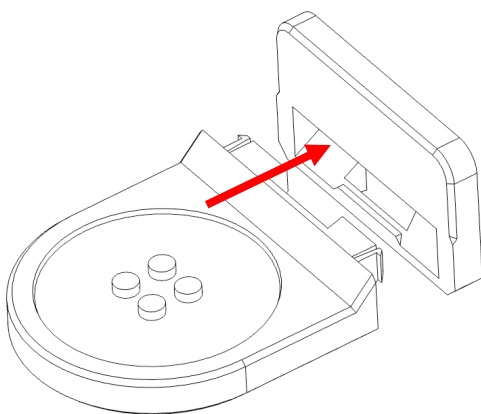
X3



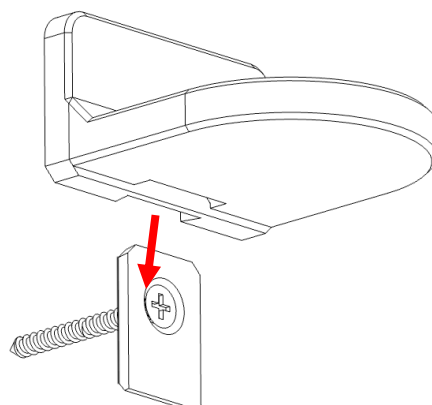
X3



X3

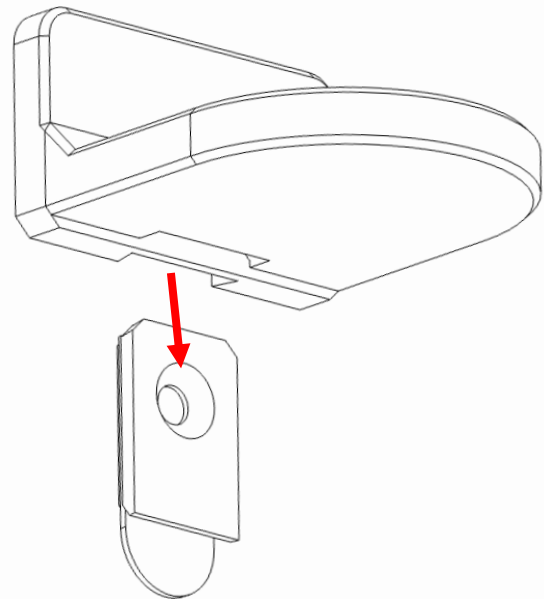
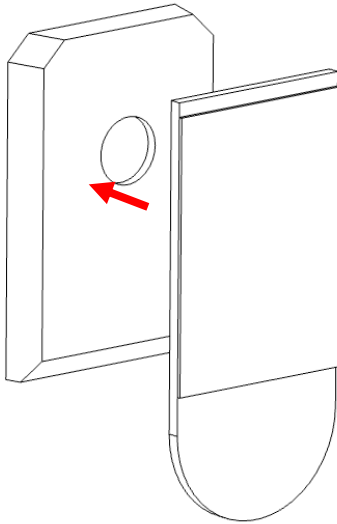


Screw the cleats to the wall in the locations you would like to display the plants. Tighten the screw until you feel resistance against the plate and then back off 1/8 of a turn.



Wall mount Instructions Tiny Plants – (10329)

You can also hang this set using 3M command strips. Designed for use with the 12 pack of small poster strips



For the large mounts please use 2 strips on the cleat. You will use 12 strips total to mount all 9 plants.

