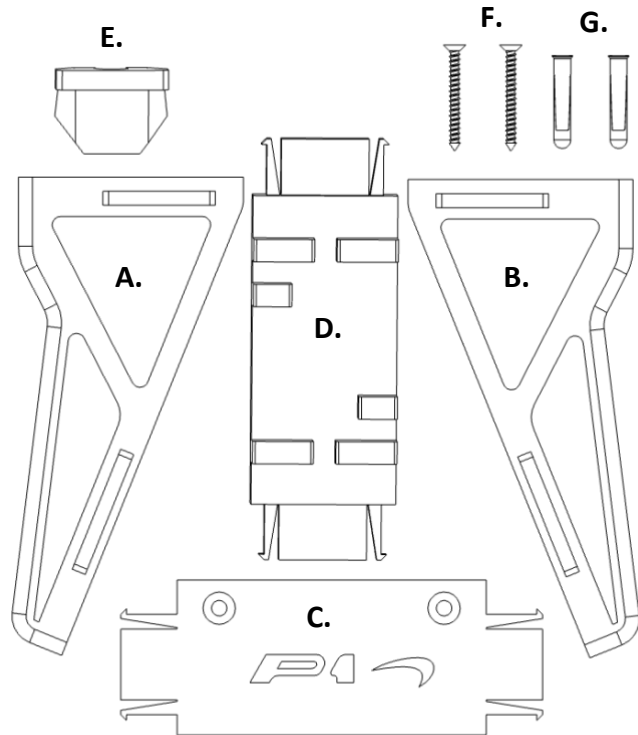


## Wall Mount Instructions

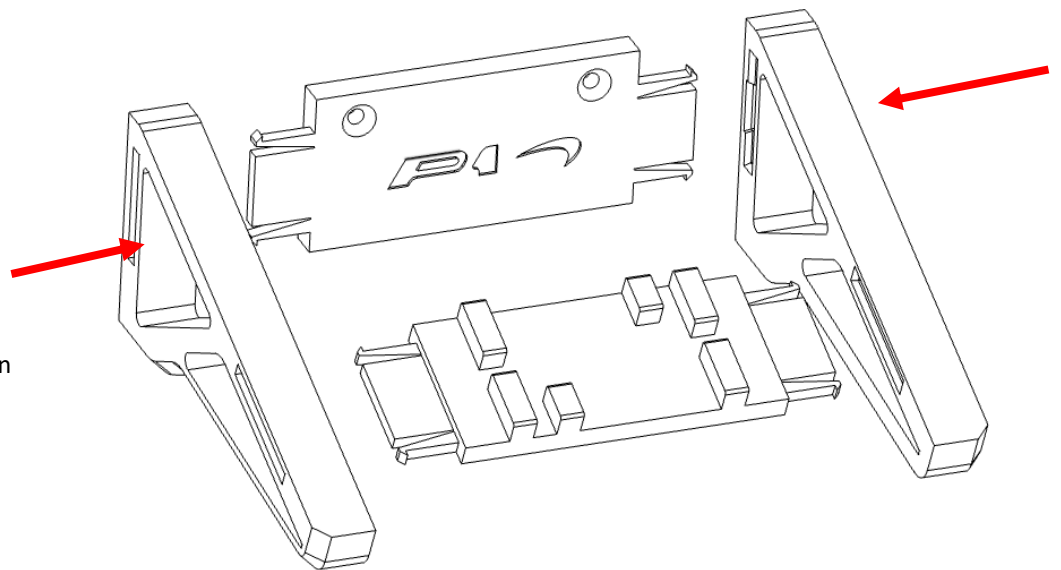
### McLaren P1 – (42172)

#### Kit Contents:

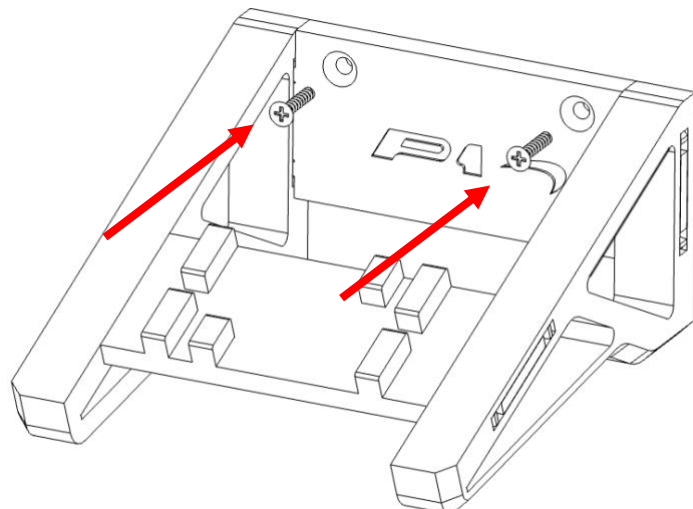
- A. 1x Left Arm
- B. 1x Right Arm
- C. 1x Back Stretcher
- D. 1x Front Stretcher
- E. 1x Flush Mount
- F. 2x Wall Screw
- G. 2x Wall Plug



#### Angled Mount

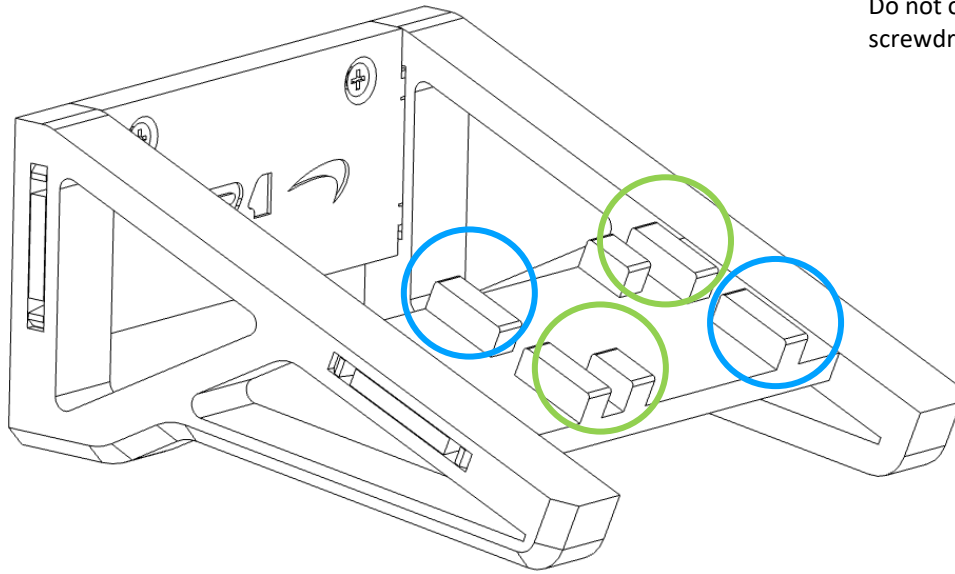


Please ensure the correct orientation of the stretchers and arms.



Install both screws into the back stretcher.  
Do not over tighten (use a screwdriver).

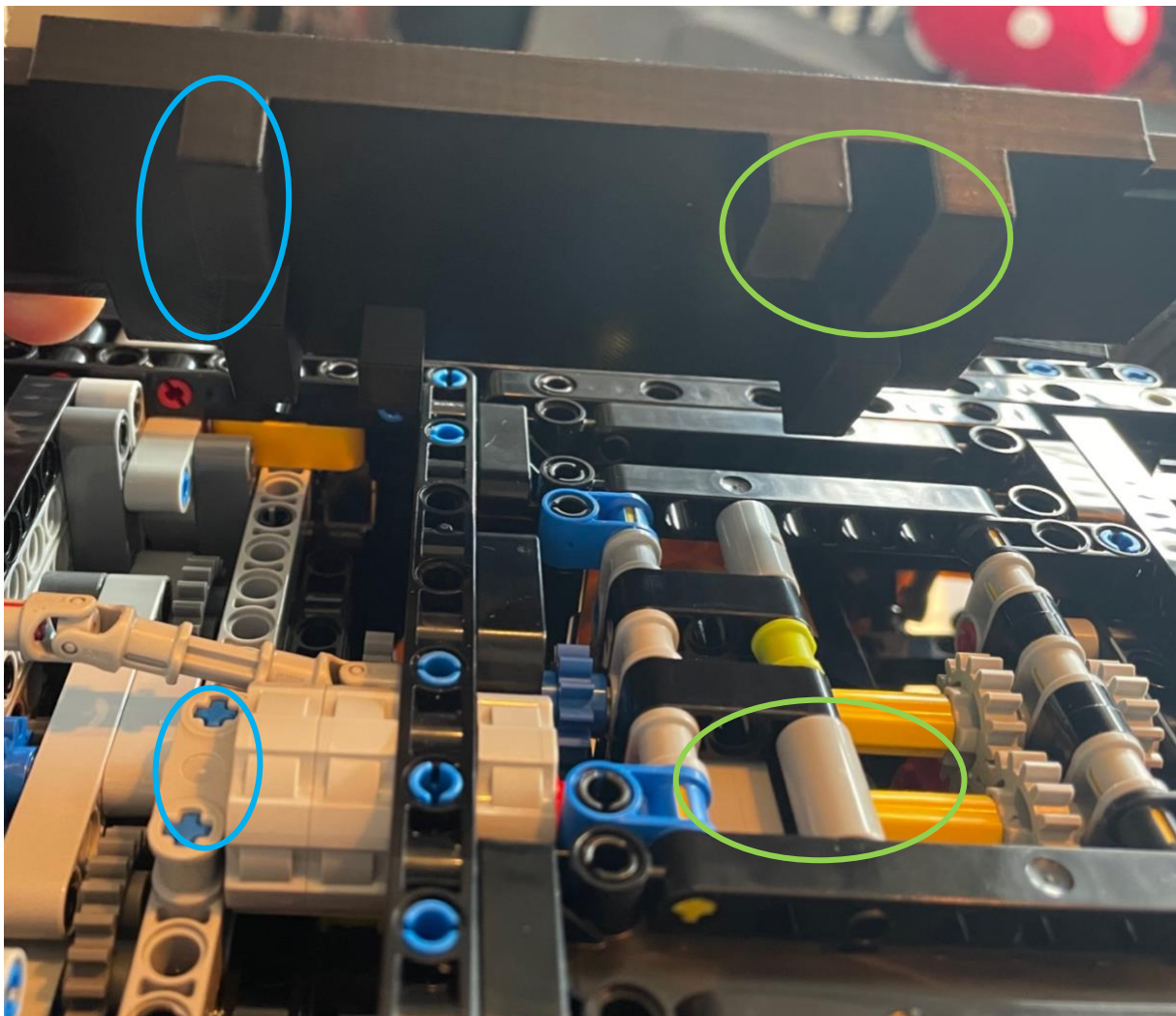
## Wall Mount Instructions McLaren P1 – (42172)



Do not over tighten (use a screwdriver).

These tabs insert into the frame of the Lego set, Line up the tabs with the corresponding locations on the Lego set.

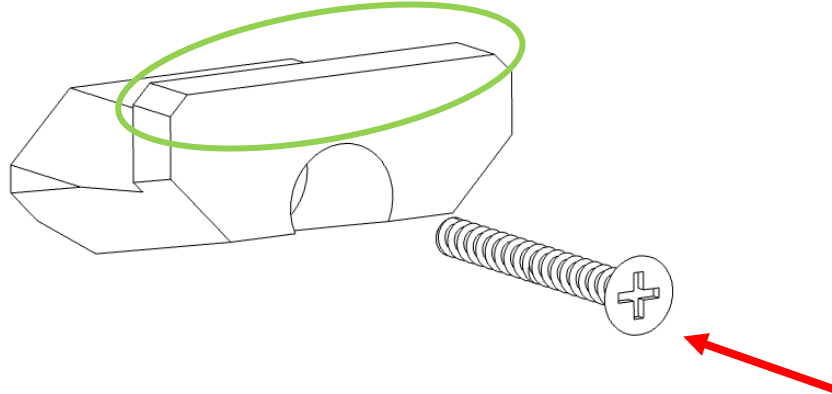
You can place the set facing either left or right.



## Wall Mount Instructions McLaren P1 – (42172)

### Flush Mount

Do not over tighten (use a screwdriver).



### **Hang Vertical**

The lip should go up and under the frame as shown.

